

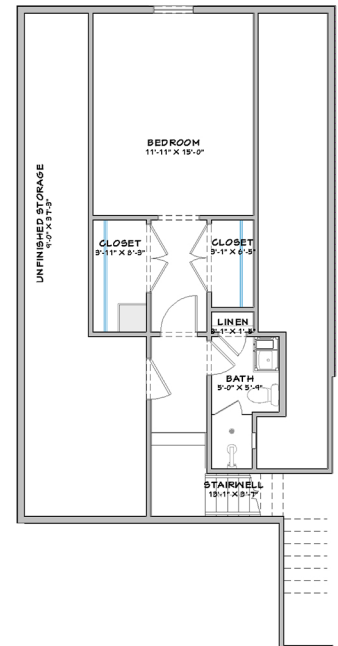
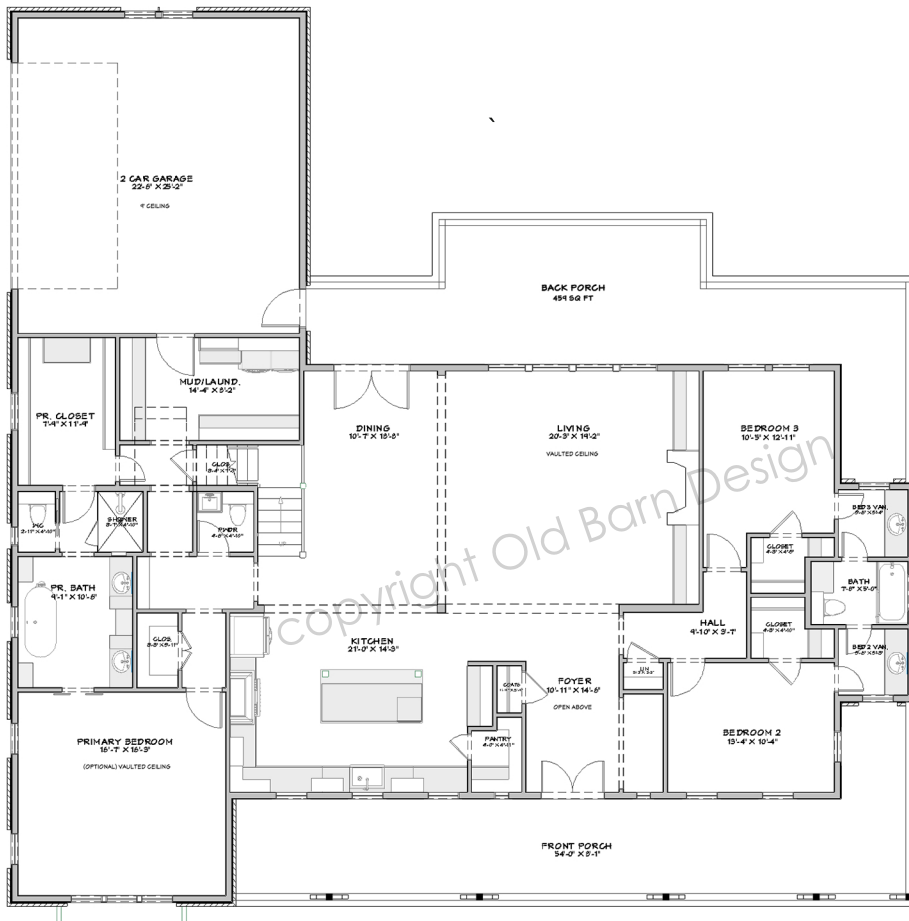
About the Pecan Grove Plan with a Bedroom and Bathroom instead of Bonus Room



PECAN GROVE

2989	4	3.5	2-3 CAR GARAGE
2 FLOORS	73'-0" WIDTH	71'-1" DEPTH	30'-10" HEIGHT

- Open, inviting layout feels airy and bright with lots of windows and glass doors
- 4 bedrooms, 3 on the first floor and 1 additional bedroom, closets and a bath on the second floor
- Symmetry and focal points throughout make this home a unique and classic beauty
- Built-ins like mudroom cabinets and a hutch in the kitchen help keep the house tidy while adding charm
- Front porch and vaulted back porch make this home a great place to spend time with family and nature
- A beautiful open staircase leads up to the bonus room, perfect for extra bedrooms, an office, playroom...so many possibilities!



2nd Floor : 392 SF of Living Area
(42 SF more than
original Pecan Grove plan)