

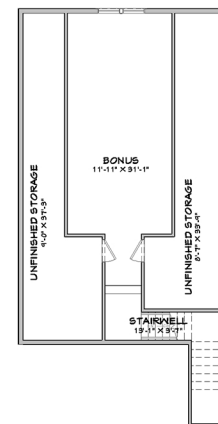
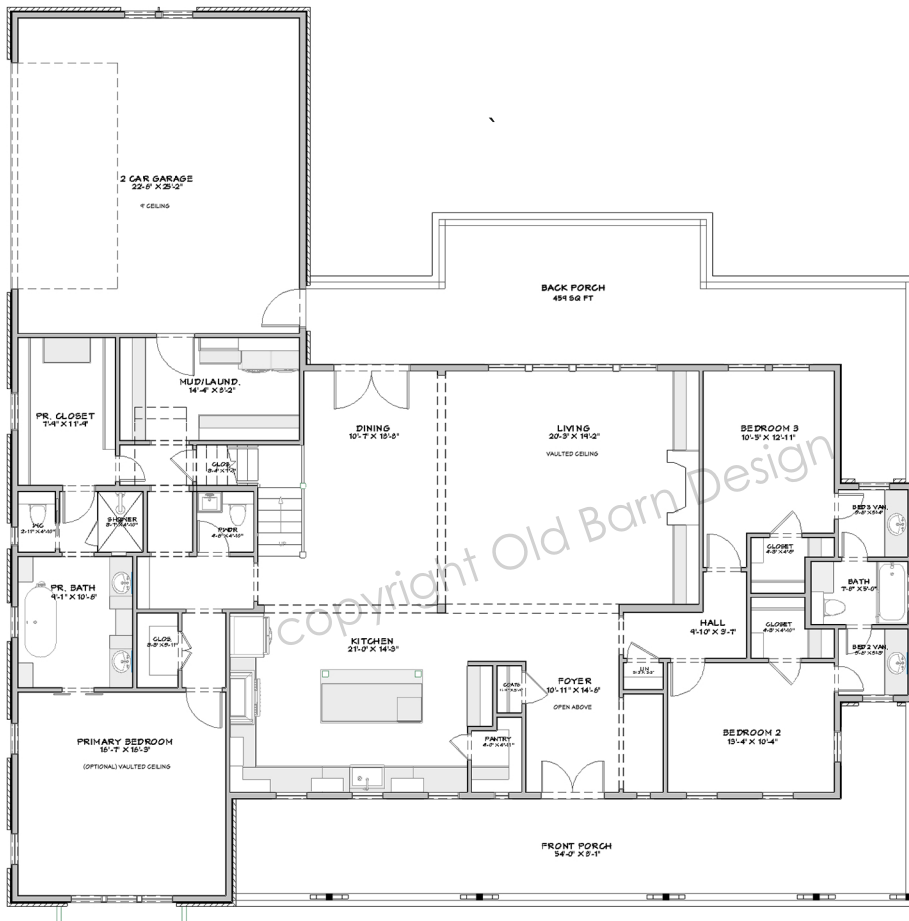
# About the Pecan Grove Plan



**PECAN GROVE**

2597+	3-4	2.5-3.5	2-3 CAR GARAGE
1-2 FLOORS	73'-0" WIDTH	71'-1" DEPTH	30'-10" HEIGHT

- Open, inviting layout feels airy and bright with lots of windows and glass doors
- 3 bedrooms on the first floor in a divided layout, including the Primary Bedroom with an optional vaulted ceiling
- Symmetry and focal points throughout make this home a unique and classic beauty
- Built-ins like mudroom cabinets and a hutch in the kitchen help keep the house tidy while adding charm
- Wrap-around front porch and vaulted back porch make this home a great place to spend time with family and nature
- A beautiful open staircase leads up to the bonus room, perfect for extra bedrooms, an office, playroom...so many possibilities!



LIVING AREA  
393 5/8 FT

OPEN TO FOYER BELOW  
7'-5" x 15'-0"