

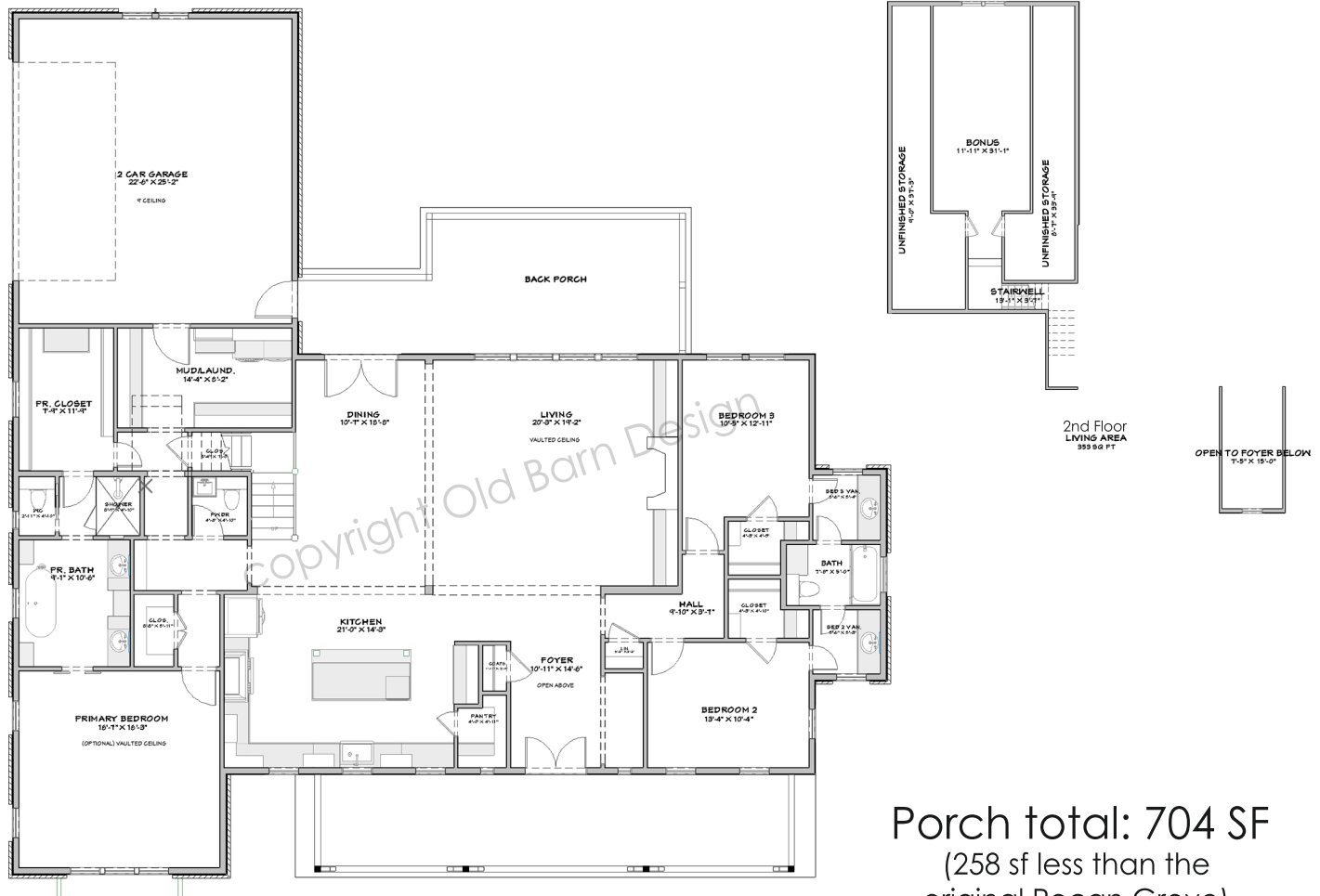
About the Pecan Grove Plan with Reduced Porches



PGC-REDUCED PORCHES

2597+ SQ. FT	3+ BEDS	2 1/2 BATHS	2 CAR GARAGE
1+ OPT. BONUS FLOORS	72'-10" WIDTH	71'-1" DEPTH	28'-1" HEIGHT

- Open, inviting layout feels airy and bright with lots of windows and glass doors
- 3 bedrooms, including the vaulted Primary bedroom, all on the first floor in a divided layout
- Symmetry and focal points throughout make this home a unique and classic beauty
- Built-ins like mudroom cabinets and a hutch in the kitchen help keep the house tidy while adding charm
- Front porch and vaulted back porch make this home a great place to spend time with family and nature
- A beautiful open staircase leads up to the bonus room, perfect for extra bedrooms, an office, playroom...so many possibilities!



Porch total: 704 SF
(258 sf less than the
original Pecan Grove)